

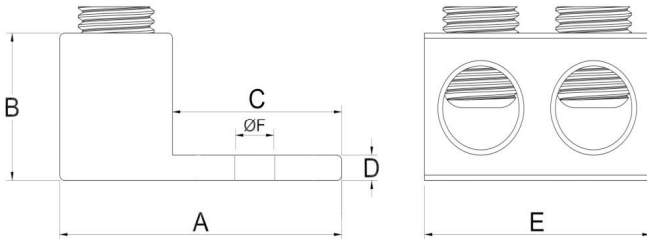
**Mechanical Lugs- Two Conductor**

**Features:**

- Suitable for use with either copper or aluminum conductors
- Provides low contact resistance
- Provides ease of installation
- Ensures reliability for copper or aluminum conductors

**Standard Material:**

- 6061-T6 aluminum alloy
- Electro tin plated
- Chamfered wire entry
- Rated to 90° C



**Fig.1**



**Fig.2**

Cat No.		Conductor Range	Dimensions(Inch)						Hex Size	Fig. Size
PST	Customer Ref.		Dimensions(mm)							
			A	B	C	D	E	F		
AU-2	PLS-ADT--2	Two:#2-14	1.16	0.56	0.68	0.10	1.00	0.32	Slot	Fig.1
			29.40	14.30	17.26	2.60	25.50	8.10		
AU-1/0	PLS-ADT--1/0	Two:1/0-14	1.48	0.81	0.82	0.18	1.00	0.28	3/16	Fig.2
			37.50	20.70	20.90	4.50	25.50	7.00		
AU-2/0	PLS-ADT--2/0	Two:2/0-14	1.48	0.81	0.82	0.18	1.00	0.28	3/16	Fig.2
			37.50	20.70	20.90	4.50	25.50	7.00		
AU-3/0	PLS-ADT--3/0	Two:3/0-6	1.88	0.89	1.00	0.15	1.38	0.28	3/16	Fig.2
			47.70	22.60	25.50	3.70	35.00	7.00		
AU-250	PLS-ADT--250	Two:250kcmil-6	2.60	1.18	1.57	0.25	1.65	0.39	5/16	Fig.2
			66.00	30.00	40.00	6.25	42.00	10.00		
AU-350	PLS-ADT--350	Two:350kcmil-6	2.87	1.24	1.75	0.25	1.89	0.57	5/16	Fig.2
			73.00	31.50	44.50	6.25	48.13	14.50		
AU-600	PLS-ADT--600	Two:600kcmil-2	3.23	1.59	1.83	0.46	2.41	0.53	1/2	Fig.2
			82.00	40.30	46.40	11.60	61.20	13.50		

## Mechanical Lugs- One Conductor

### Features:

- Suitable for use with either copper or aluminum conductors
- Provides low contact resistance
- Provides ease of installation
- Ensures reliability for copper or aluminum conductors

### Standard Material:



- 6061-T6 aluminum alloy
  - Electro tin plated
  - Chamfered wire entry
  - Rated to 90° C

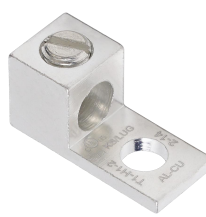
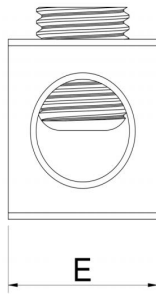
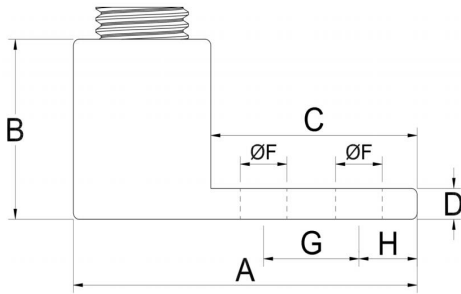


Fig.1



Fig.2



Fig.3

Cat No.		Conductor Range	Dimensions(Inch)							Hex Size	Fig No.
PST	Customer Ref.		Dimensions(mm)								
			A	B	C	D	E	F	G		
TA-2	PLS-AST-2	#2-14	1.16	0.56	0.68	0.10	0.50	0.28	-	Slot	Fig.1
			29.40	14.30	17.26	2.60	12.80	7.00			
TA-1/0	PLS-AST-1/0	1/0-14	1.48	0.81	0.82	0.18	0.63	0.27	-	3/16	Fig.2
			37.50	20.70	20.90	4.50	16.00	6.80			
TA-2/0	PLS-AST-2/0	2/0-14	1.48	0.81	0.82	0.18	0.63	0.27	-	3/16	Fig.2
			37.50	20.70	20.90	4.50	16.00	6.80			
TA-3/0	PLS-AST-3/0	3/0-6	1.88	0.89	1.00	0.15	0.70	0.28	-	3/16	Fig.2
			47.70	22.60	25.50	3.70	17.85	7.00			
TA-250	PLS-AST-250	250kcmil-6	1.97	1.12	0.96	0.26	1.00	0.33	-	5/16	Fig.2
			50.00	28.50	24.40	6.50	25.45	8.50			
TA-350	PLS-AST-350	350kcmil-6	2.24	1.26	1.14	0.25	1.12	0.41	-	5/16	Fig.2
			57.00	32.00	29.00	6.30	28.45	10.30			
TA-600	PLS-AST-600	600kcmil-2	3.23	1.59	1.83	0.46	1.30	0.41	-	1/2	Fig.2
			82.00	40.30	46.40	11.60	33.00	10.30			
TA-600-2H	PLS-AST-600-2H	600kcmil-2	4.71	1.57	3.30	0.45	1.51	0.56	1.75	1/2	Fig.3
			119.55	40.00	83.85	11.35	38.30	14.22			

## Mechanical Lugs- Panelboard Lugs

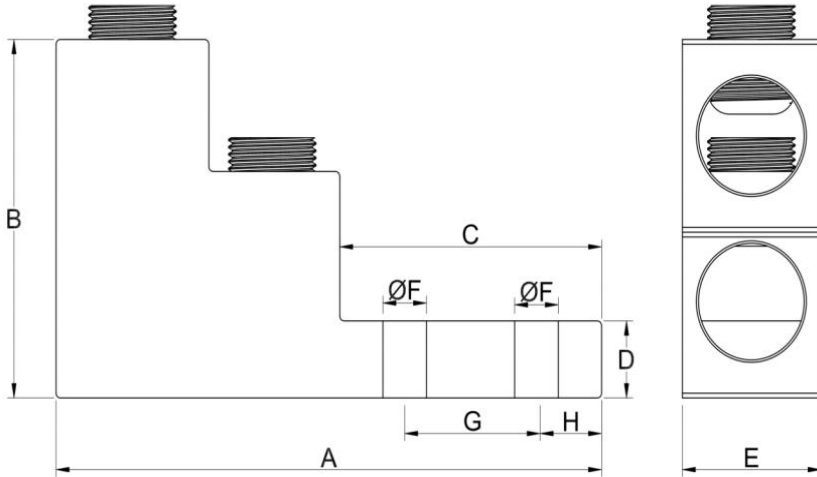
### Features:

- Suitable for use with either copper or aluminum conductors
- Provides low contact resistance
- Provides ease of installation
- Ensures reliability for copper or aluminum conductors

### Standard Material:



- 6061-T6 aluminum alloy
- Electro tin plated
- Chamfered wire entry
- Rated to 90° C



Cat No.		Conductor Range	Dimensions(Inch)						Hex Size
PST	Customer Ref.		----- Dimensions(mm)						
			A	B	C	D	E	F	
TA-750-2H+2C	PLS-AST-750-2H+2C	Two:750kcmil-1/0	5.53	3.00	2.94	0.74	1.50	0.57	1/2
			140.50	76.20	74.60	18.90	38.00	14.40	