

Mechanical Lugs- Two Conductor

Features:

- Suitable for use with either copper or aluminum conductors
- Provides low contact resistance
- Provides ease of installation
- Ensures reliability for copper or aluminum conductors

Standard Material:

- 6061-T6 aluminum alloy
- Electro tin plated
- Chamfered wire entry
- Rated to 90° C

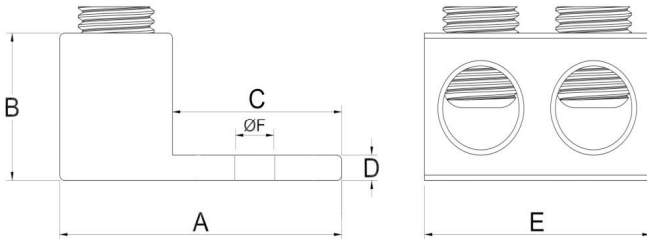


Fig.1



Fig.2

| Cat No. | | Conductor Range | Dimensions(Inch) | | | | | | Hex Size | Fig. Size |
|---------|---------------|-----------------|------------------|-------|-------|-------|-------|-------|----------|-----------|
| PST | Customer Ref. | | Dimensions(mm) | | | | | | | |
| | | | A | B | C | D | E | F | | |
| AU-2 | PLS-ADT--2 | Two:#2-14 | 1.16 | 0.56 | 0.68 | 0.10 | 1.00 | 0.32 | Slot | Fig.1 |
| | | | 29.40 | 14.30 | 17.26 | 2.60 | 25.50 | 8.10 | | |
| AU-1/0 | PLS-ADT--1/0 | Two:1/0-14 | 1.48 | 0.81 | 0.82 | 0.18 | 1.00 | 0.28 | 3/16 | Fig.2 |
| | | | 37.50 | 20.70 | 20.90 | 4.50 | 25.50 | 7.00 | | |
| AU-2/0 | PLS-ADT--2/0 | Two:2/0-14 | 1.48 | 0.81 | 0.82 | 0.18 | 1.00 | 0.28 | 3/16 | Fig.2 |
| | | | 37.50 | 20.70 | 20.90 | 4.50 | 25.50 | 7.00 | | |
| AU-3/0 | PLS-ADT--3/0 | Two:3/0-6 | 1.88 | 0.89 | 1.00 | 0.15 | 1.38 | 0.28 | 3/16 | Fig.2 |
| | | | 47.70 | 22.60 | 25.50 | 3.70 | 35.00 | 7.00 | | |
| AU-250 | PLS-ADT--250 | Two:250kcmil-6 | 2.60 | 1.18 | 1.57 | 0.25 | 1.65 | 0.39 | 5/16 | Fig.2 |
| | | | 66.00 | 30.00 | 40.00 | 6.25 | 42.00 | 10.00 | | |
| AU-350 | PLS-ADT--350 | Two:350kcmil-6 | 2.87 | 1.24 | 1.75 | 0.25 | 1.89 | 0.57 | 5/16 | Fig.2 |
| | | | 73.00 | 31.50 | 44.50 | 6.25 | 48.13 | 14.50 | | |
| AU-600 | PLS-ADT--600 | Two:600kcmil-2 | 3.23 | 1.59 | 1.83 | 0.46 | 2.41 | 0.53 | 1/2 | Fig.2 |
| | | | 82.00 | 40.30 | 46.40 | 11.60 | 61.20 | 13.50 | | |

Mechanical Lugs- One Conductor

Features:

- Suitable for use with either copper or aluminum conductors
- Provides low contact resistance
- Provides ease of installation
- Ensures reliability for copper or aluminum conductors

Standard Material:



- 6061-T6 aluminum alloy
 - Electro tin plated
 - Chamfered wire entry
 - Rated to 90° C

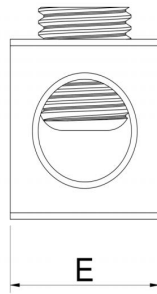
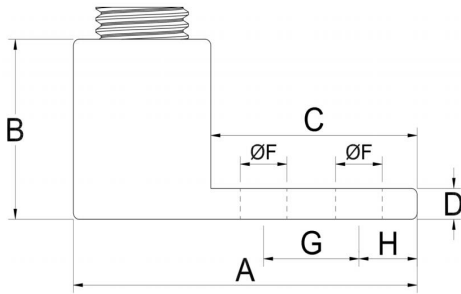


Fig.1



Fig.2



Fig.3

| Cat No. | | Conductor Range | Dimensions(Inch) | | | | | | | Hex Size | Fig No. |
|-----------|----------------|-----------------|------------------|-------|-------|-------|-------|-------|------|----------|---------|
| PST | Customer Ref. | | Dimensions(mm) | | | | | | | | |
| | | | A | B | C | D | E | F | G | | |
| TA-2 | PLS-AST-2 | #2-14 | 1.16 | 0.56 | 0.68 | 0.10 | 0.50 | 0.28 | - | Slot | Fig.1 |
| | | | 29.40 | 14.30 | 17.26 | 2.60 | 12.80 | 7.00 | | | |
| TA-1/0 | PLS-AST-1/0 | 1/0-14 | 1.48 | 0.81 | 0.82 | 0.18 | 0.63 | 0.27 | - | 3/16 | Fig.2 |
| | | | 37.50 | 20.70 | 20.90 | 4.50 | 16.00 | 6.80 | | | |
| TA-2/0 | PLS-AST-2/0 | 2/0-14 | 1.48 | 0.81 | 0.82 | 0.18 | 0.63 | 0.27 | - | 3/16 | Fig.2 |
| | | | 37.50 | 20.70 | 20.90 | 4.50 | 16.00 | 6.80 | | | |
| TA-3/0 | PLS-AST-3/0 | 3/0-6 | 1.88 | 0.89 | 1.00 | 0.15 | 0.70 | 0.28 | - | 3/16 | Fig.2 |
| | | | 47.70 | 22.60 | 25.50 | 3.70 | 17.85 | 7.00 | | | |
| TA-250 | PLS-AST-250 | 250kcmil-6 | 1.97 | 1.12 | 0.96 | 0.26 | 1.00 | 0.33 | - | 5/16 | Fig.2 |
| | | | 50.00 | 28.50 | 24.40 | 6.50 | 25.45 | 8.50 | | | |
| TA-350 | PLS-AST-350 | 350kcmil-6 | 2.24 | 1.26 | 1.14 | 0.25 | 1.12 | 0.41 | - | 5/16 | Fig.2 |
| | | | 57.00 | 32.00 | 29.00 | 6.30 | 28.45 | 10.30 | | | |
| TA-600 | PLS-AST-600 | 600kcmil-2 | 3.23 | 1.59 | 1.83 | 0.46 | 1.30 | 0.41 | - | 1/2 | Fig.2 |
| | | | 82.00 | 40.30 | 46.40 | 11.60 | 33.00 | 10.30 | | | |
| TA-600-2H | PLS-AST-600-2H | 600kcmil-2 | 4.71 | 1.57 | 3.30 | 0.45 | 1.51 | 0.56 | 1.75 | 1/2 | Fig.3 |
| | | | 119.55 | 40.00 | 83.85 | 11.35 | 38.30 | 14.22 | | | |

Mechanical Lugs- Panelboard Lugs

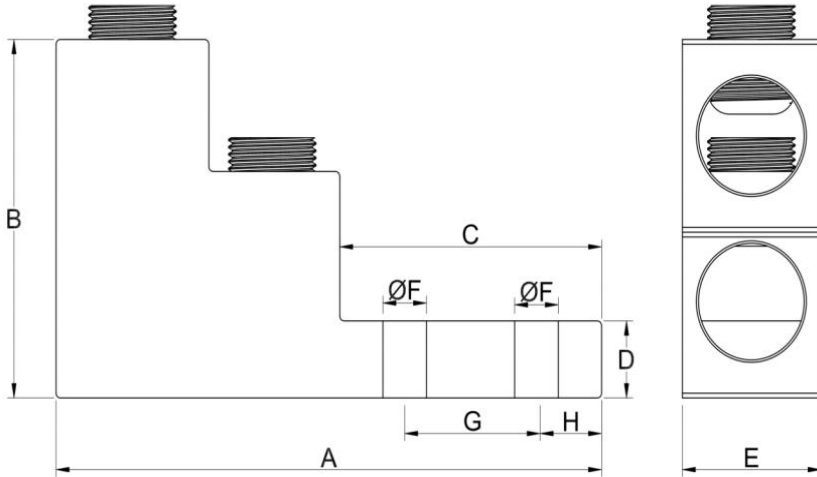
Features:

- Suitable for use with either copper or aluminum conductors
- Provides low contact resistance
- Provides ease of installation
- Ensures reliability for copper or aluminum conductors

Standard Material:



- 6061-T6 aluminum alloy
- Electro tin plated
- Chamfered wire entry
- Rated to 90° C



| Cat No. | | Conductor Range | Dimensions(Inch) | | | | | | Hex Size |
|--------------|-------------------|------------------|-------------------------|-------|-------|-------|-------|-------|----------|
| PST | Customer Ref. | | ----- Dimensions(mm) | | | | | | |
| | | | A | B | C | D | E | F | |
| TA-750-2H+2C | PLS-AST-750-2H+2C | Two:750kcmil-1/0 | 5.53 | 3.00 | 2.94 | 0.74 | 1.50 | 0.57 | 1/2 |
| | | | 140.50 | 76.20 | 74.60 | 18.90 | 38.00 | 14.40 | |